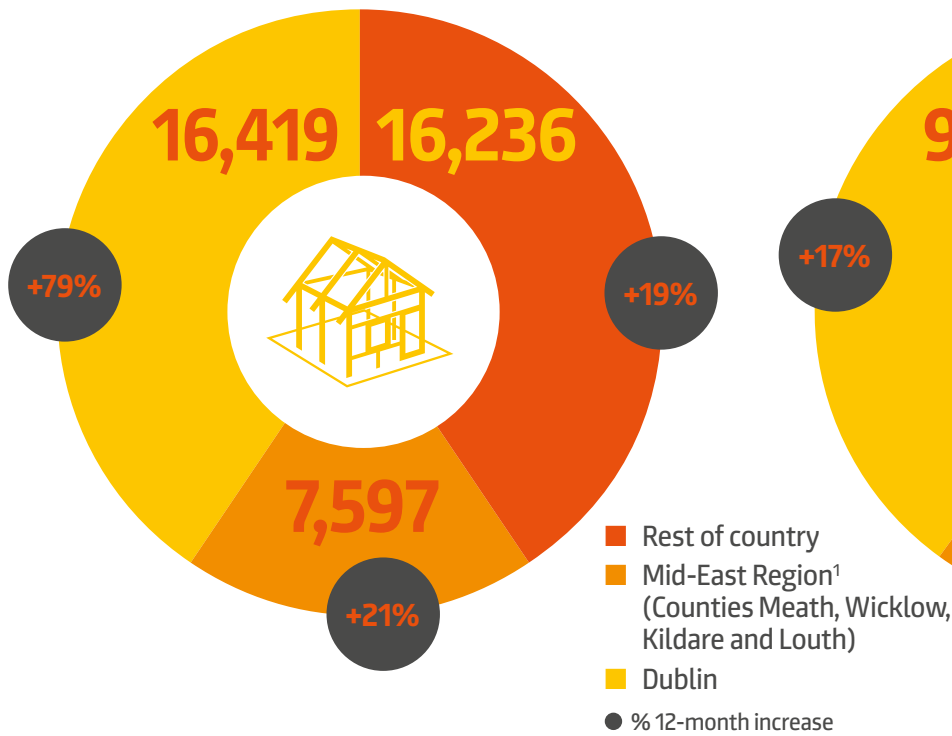


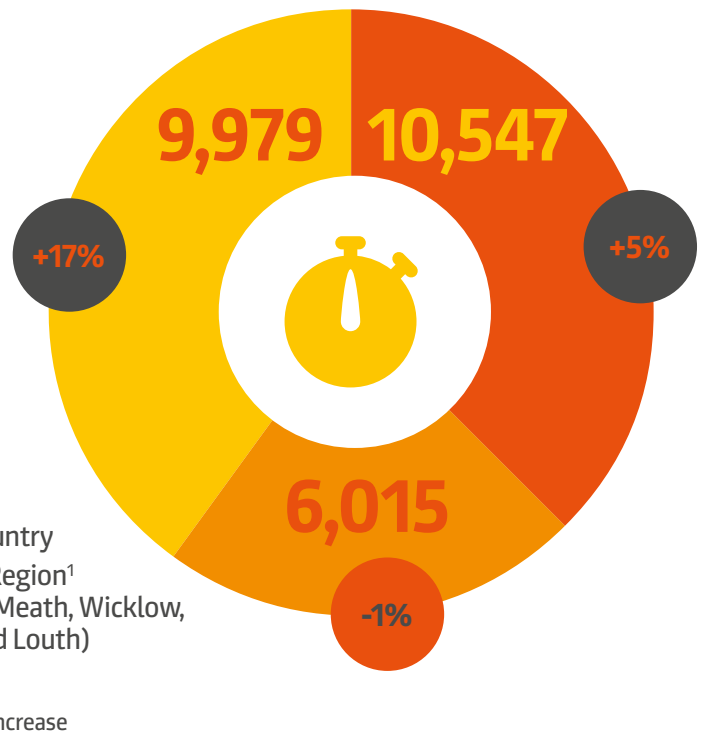
Planning Permissions Granted (Q4 2019)

Total nationwide units:
40,252 (up 38% year on year)

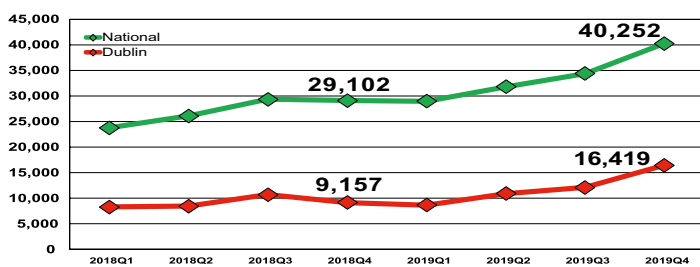


Commencement Notices (March 2020)

Total nationwide notices:
26,541 (up 8% year on year)

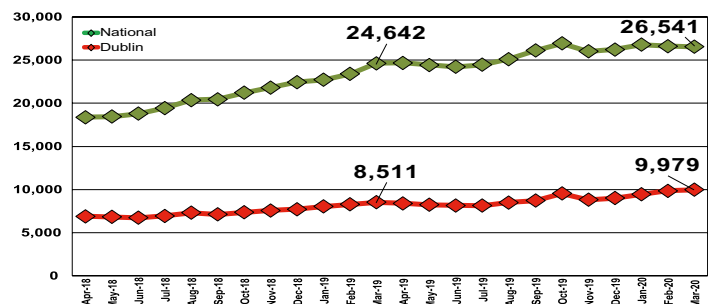


Planning Permissions - 12 month rolling total of number of units granted permission



Source: CSO

Total Units Commenced - 12 Month Rolling Total



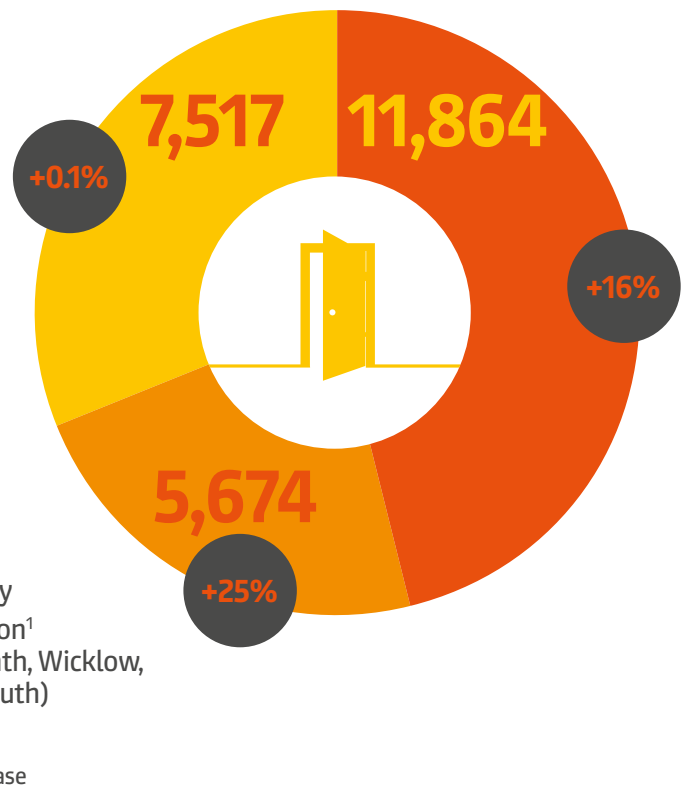
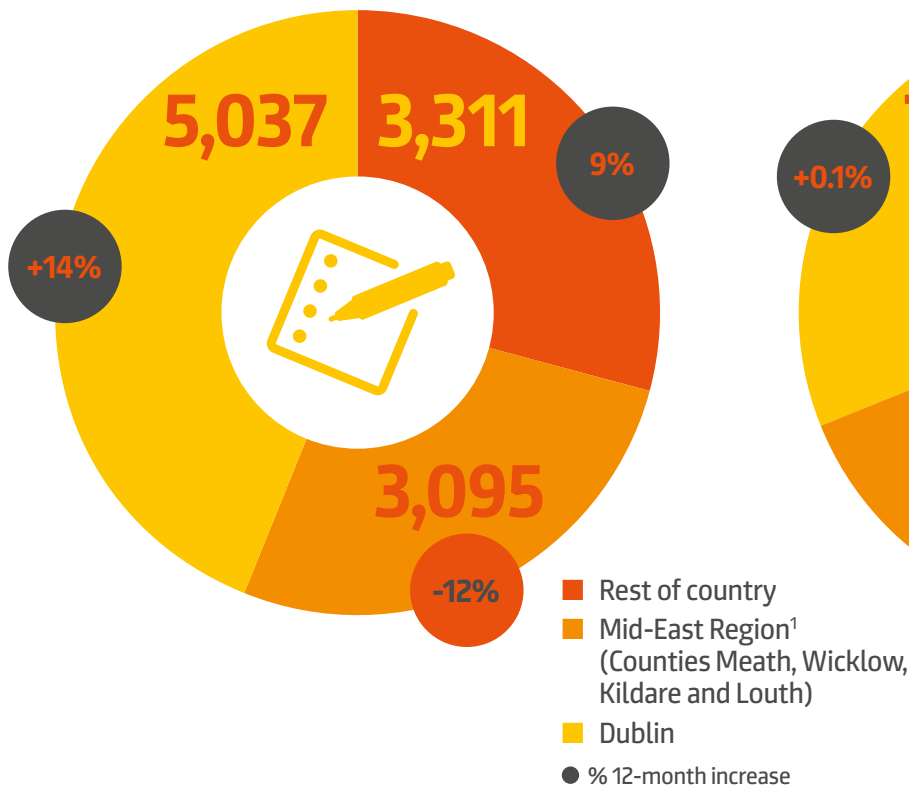
Source: DHPCLG/BCMS

Registrations (March 2020)

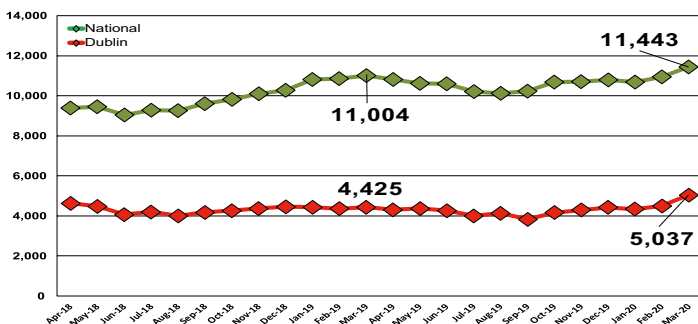
Total nationwide units:
11,443 (up 4% year on year)

New Homes Available For Use² (Q1 2020)

Total nationwide units:
25,055 (up 13% year on year)

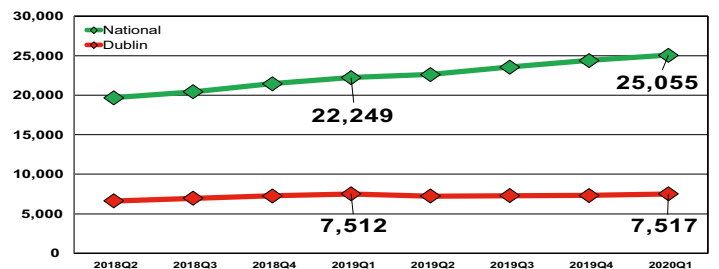


Registrations - 12 month rolling total



Source: Homebond

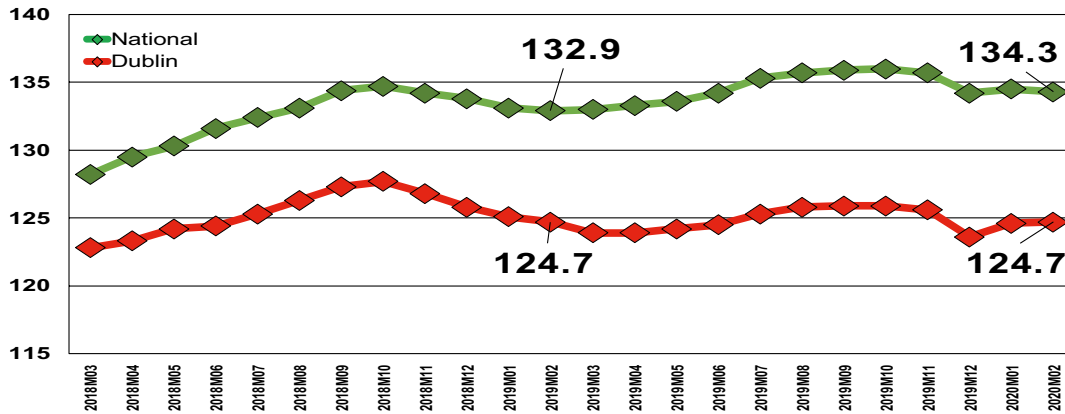
New Homes Available For Use - 12 month rolling total



Source: CSO

Prices – Purchase³ and Rent⁴ – Latest Annual Rate of Change

Residential Property Price Index All Residential Properties
March 2018 to February 2020 (Jan 2015=100)



Source: CSO



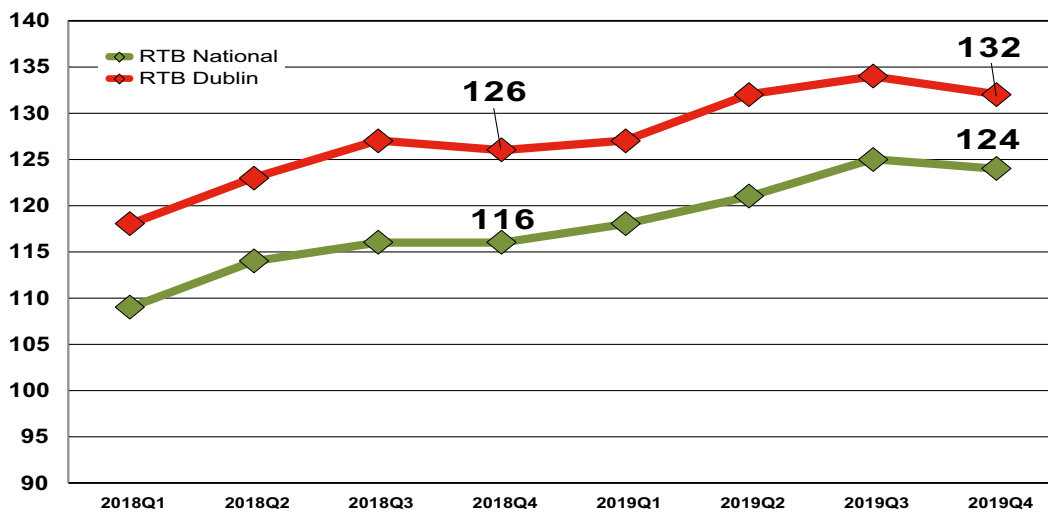
Purchase

National
+1.1%

Dublin
-0.1%

Rest of Ireland
+2.4%

RTB Rent Index Q1 2018 - Q4 2019 (2007 Q3=100)



Source: Residential Tenancies Board



Rent

National
+6.4%

Dublin
+5.0%

Rest of Ireland⁴
+7.8%

Footnotes

- The definition of Mid-East as used in this report has changed and now includes Meath, Wicklow, Kildare and Louth. This change has been made to align the data to the new NUTS classifications for Ireland. See <https://www.cso.ie/en/methods/revnuts23/> for further detail.
- The aggregate "New Homes Available for Use" is the total of dwellings in the categories New Dwelling Completions, Unfinished Housing Development Connections and Reconnections as reported by the CSO. For further detail see <https://www.cso.ie/en/releasesandpublications/ep/p-ndc/newdwellingcompletionsq12018/>
- For February 2020 and for releases going forward, the CSO have rebased the residential property price index to represent price changes with reference to the annual average price for the year 2015 rather than the previous base period of January 2005.
- Rest of Ireland in the context of Rental data refers to Ireland excluding the Greater Dublin Area, whereas in respect of prices it refers to Ireland excluding Dublin only.