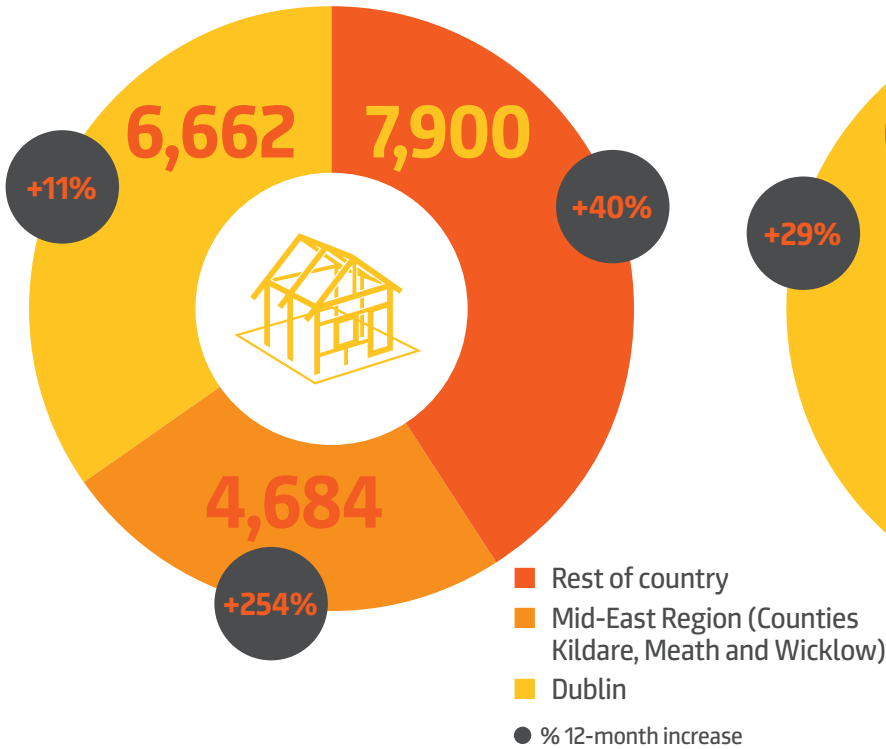


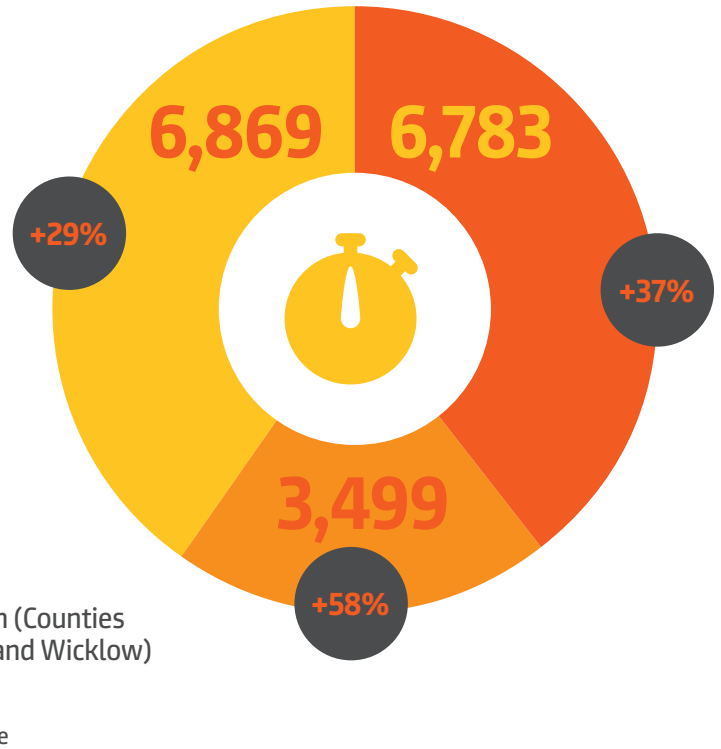
Planning Permissions Granted (Q2, 2017)

Total nationwide units:
19,246 (up 49% year on year)

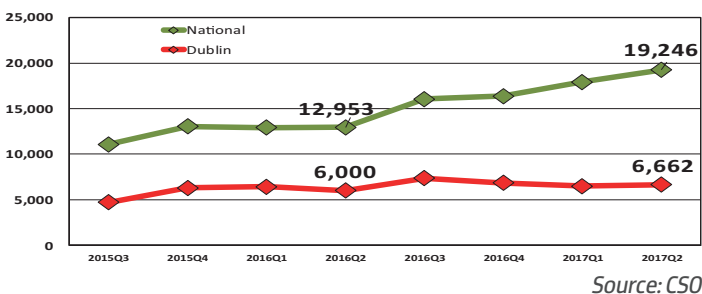


Commencement Notices (October 2017)

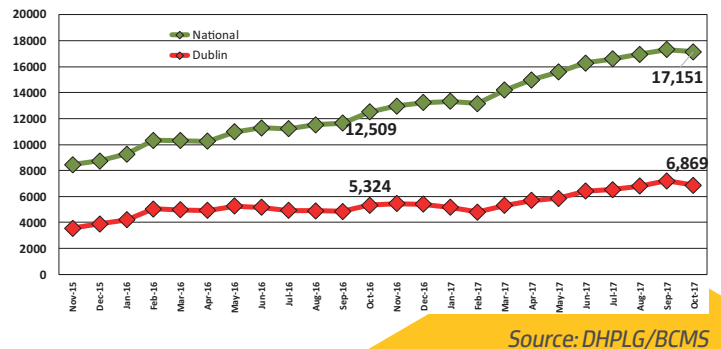
Total nationwide notices:
17,151 (up 37% year on year)



Planning Permissions - 12 month rolling total of number of units granted permission

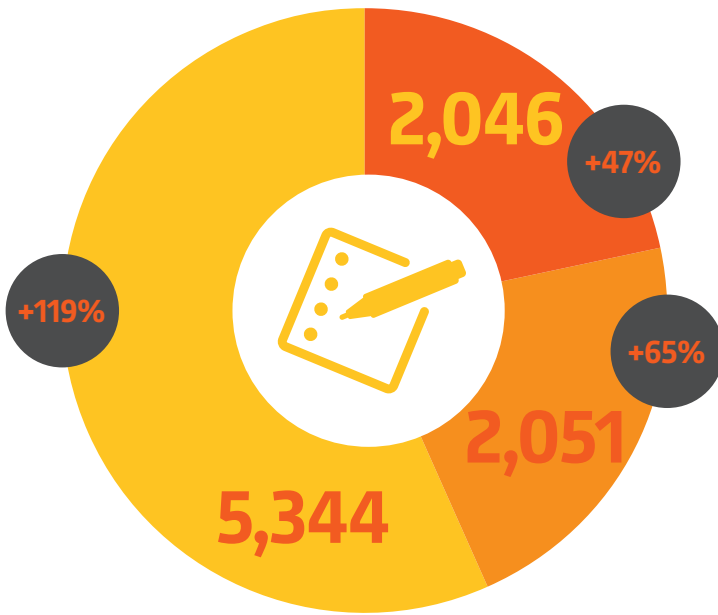


Total Units Commenced - 12 Month Rolling Total



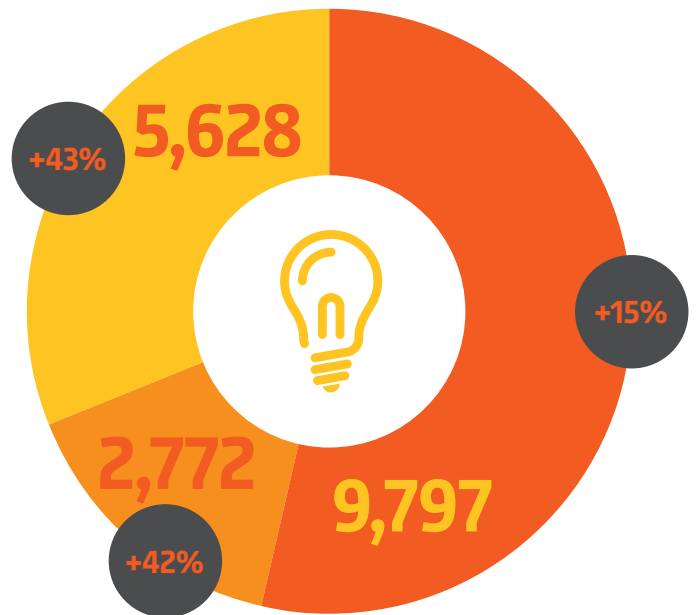
Registrations (October 2017)

Total nationwide units: **9,441** (up 86% year on year)



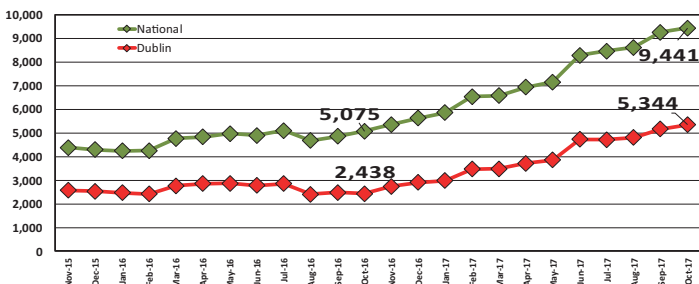
ESB Connections (October 2017)

Total nationwide connections: **18,197** (up 26% year on year)



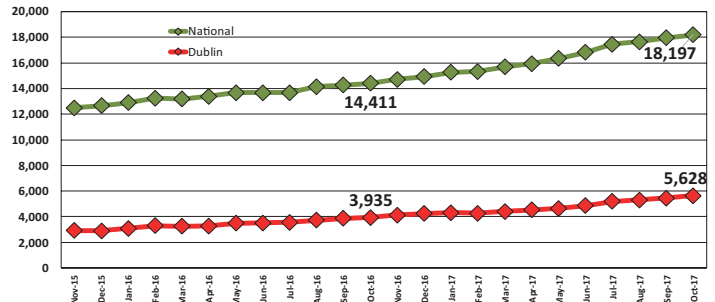
- Rest of country
- Mid-East Region (Counties Kildare, Meath and Wicklow)
- Dublin
- % 12-month increase

Registrations - 12 month rolling total



Source: Homebond

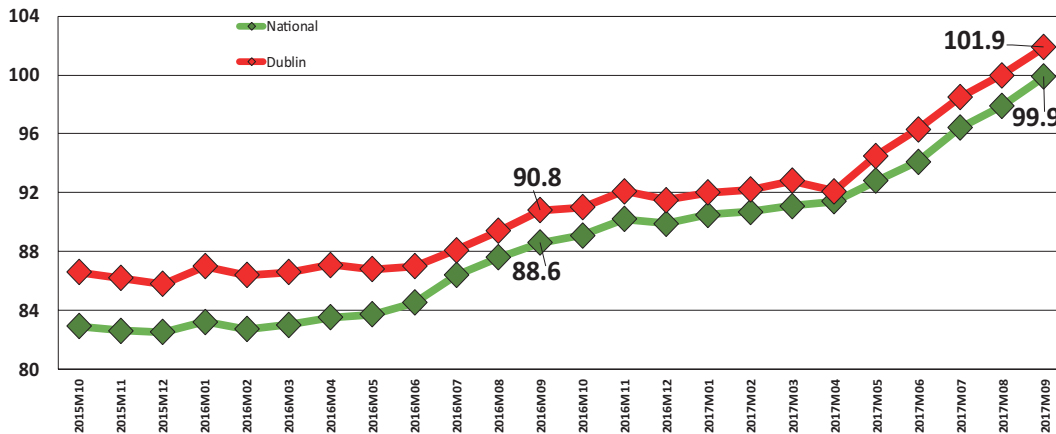
Monthly ESB Connections - 12 Month Rolling Total



Source: ESB

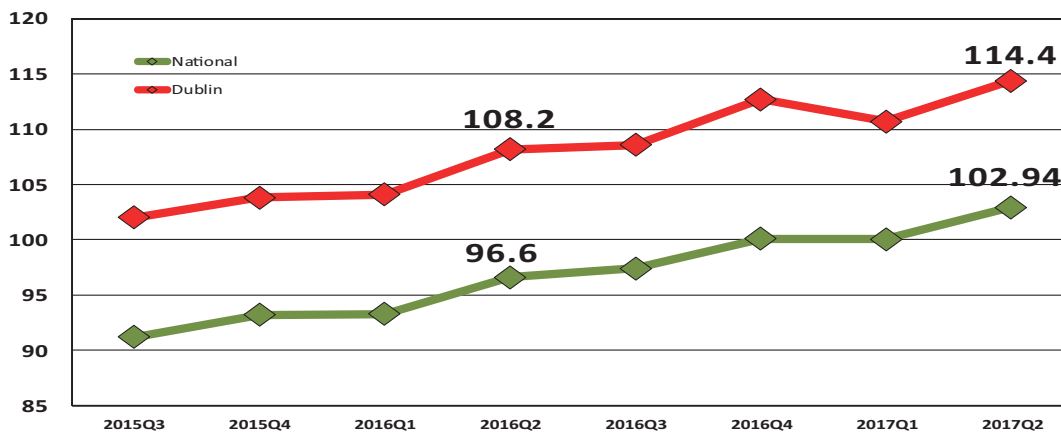
Prices – Purchase and Rent – Latest Annual Rate of Change

CSO Residential Property Price Index All Residential Properties
Oct 2015 - Sep 2017 (Jan 2005=100)



Source: CSO

RTB Rent Index (2007 Q3=100)



Source: Residential Tenancies Board



Purchase

National
+12.8%
Dublin
+12.2%
Rest of Ireland
+13.2%



Rent

National
+7.0%
Dublin
+5.8%
Rest of Ireland
+8.0%